

Plainedge Splashtop Guide



Displaying your computer to student iPads

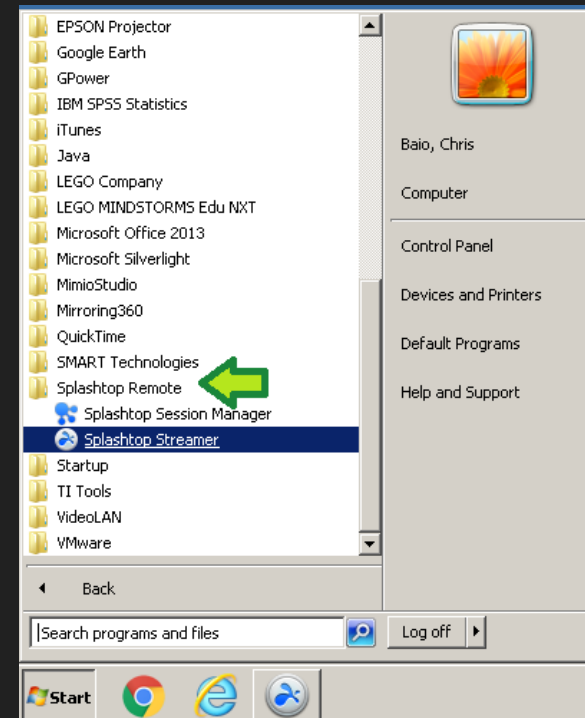
Plainedge Splashtop Guide



Open 'Splashtop Streamer' from the Start Menu.

- First click on Start, then All Programs.
- Scroll down to 'Splashtop Remote' and click on it.
- Click on 'Splashtop Streamer'.

***On your
computer**



Plainedge Splashtop Guide



If you have a Splashtop account, you may log in here.

***On your
computer**

The screenshot shows the Splashtop Streamer application window. The title bar reads "splashtop streamer". On the left is a sidebar with menu items: Status (highlighted with an orange bar), Settings, Security, Advanced, Sharing, and About. The main content area displays:

- Computer Name:** Splashtop Computer [edit icon]
- Accessed by:** Not being accessed
- Splashtop Account Login:** Log in so your computer can be accessed remotely.

Below this is a login form with:

- Email:
- Password:
- Log In button
- [Forgot your password?](#)
- [Create a Splashtop Account](#)

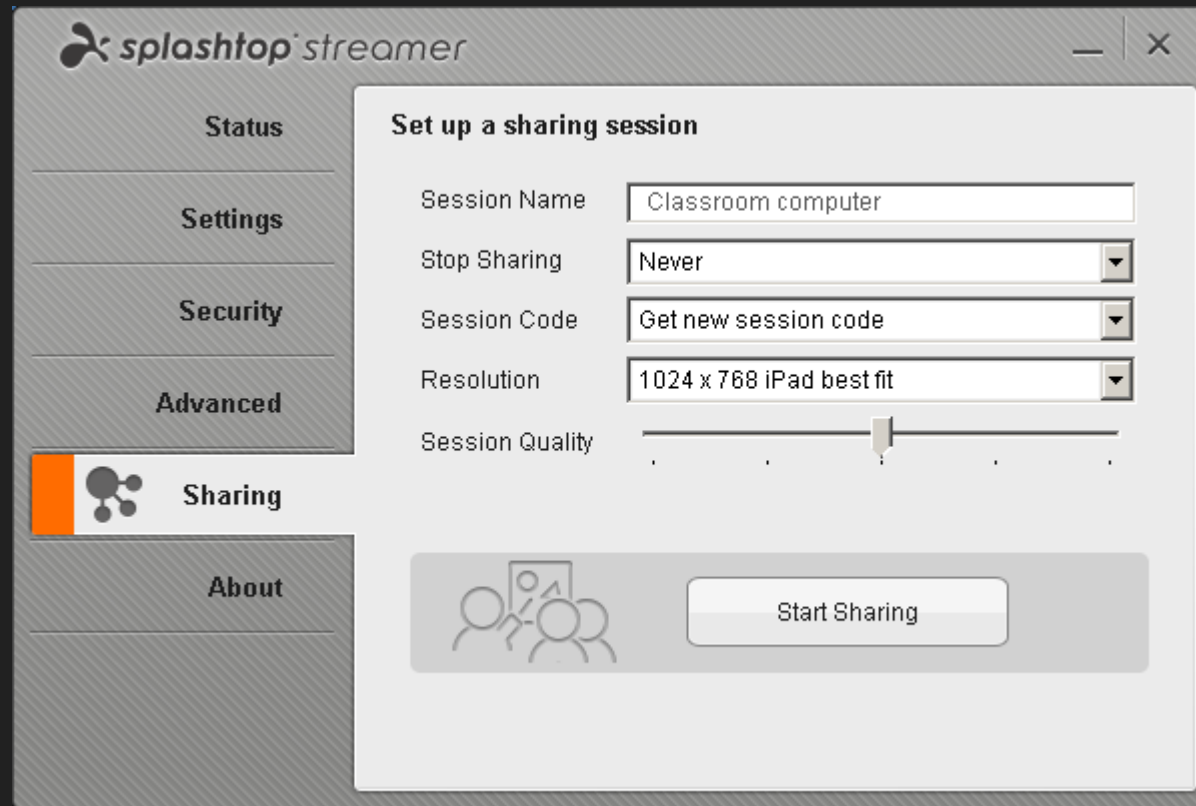
At the bottom right, there is a link: [Log into Splashtop Enterprise.](#)



Plainedge Splashtop Guide

Once logged in, click on the Sharing tab, add a Session name, then click 'Start Sharing'.

***On your computer**

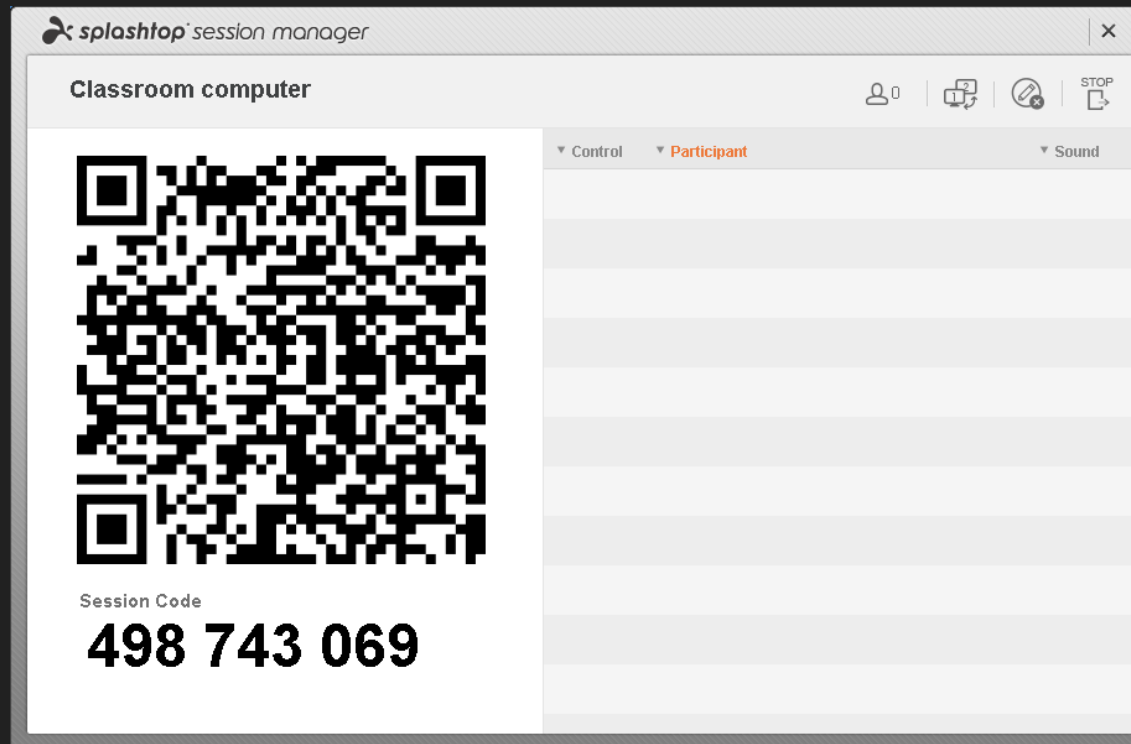


Plainedge Splashtop Guide

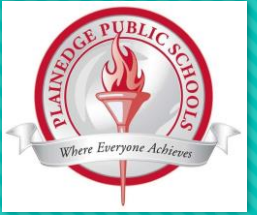


You are now ready to start sharing your screen.

***On your
computer**



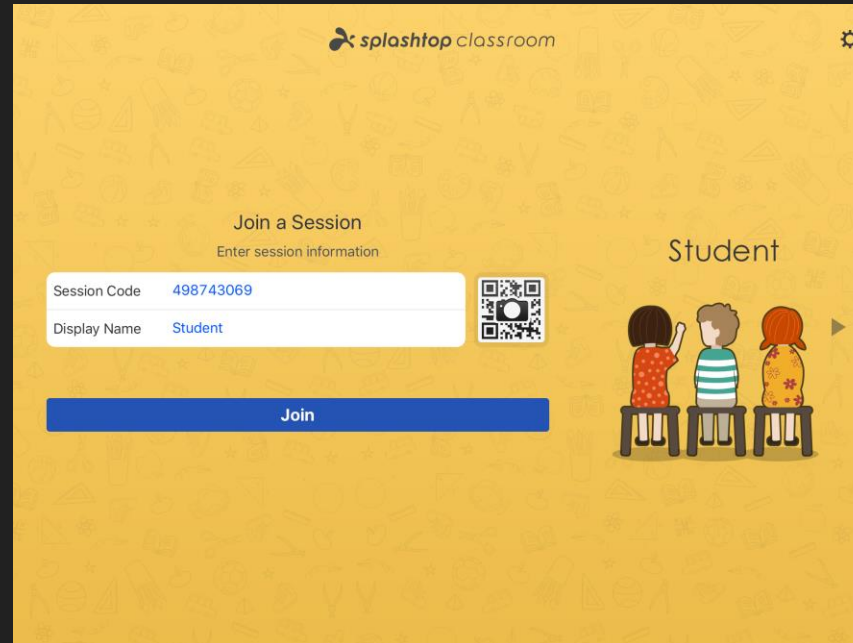
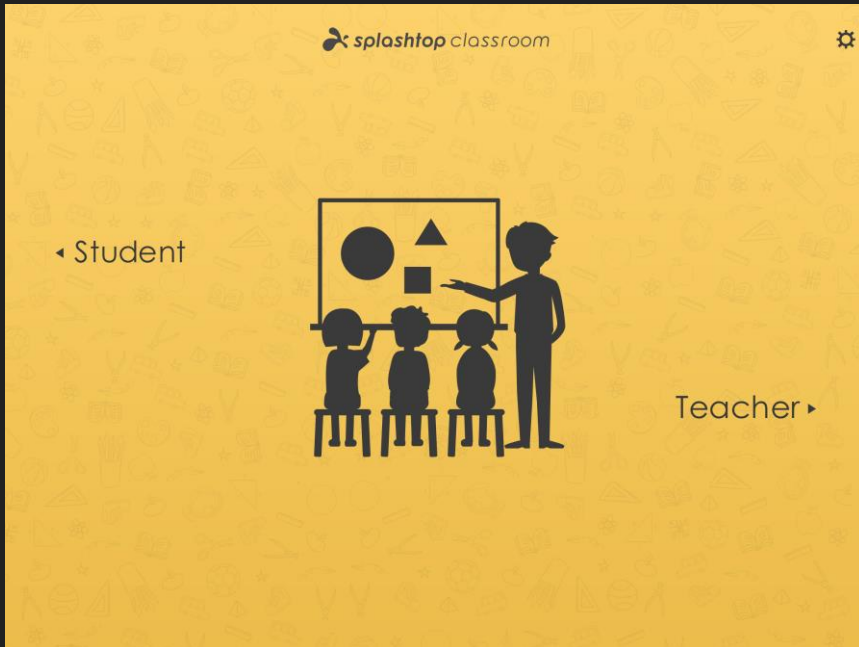
*On iPad



Plainedge Splashtop Guide

Download and open the 'Splashtop Classroom' App on students' iPads.

- Press 'Student'.
- Students type in session code and their name, or can use QR code.
- Press 'Join'.

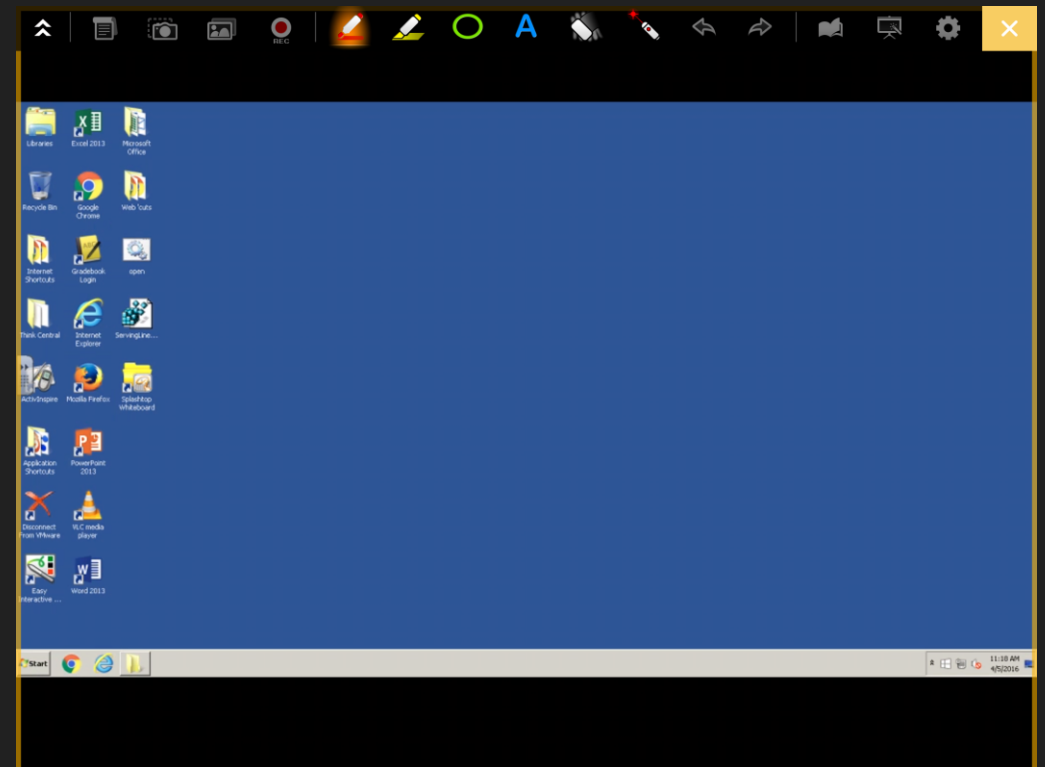


*On iPad

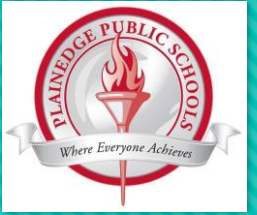


Plainedge Splashtop Guide

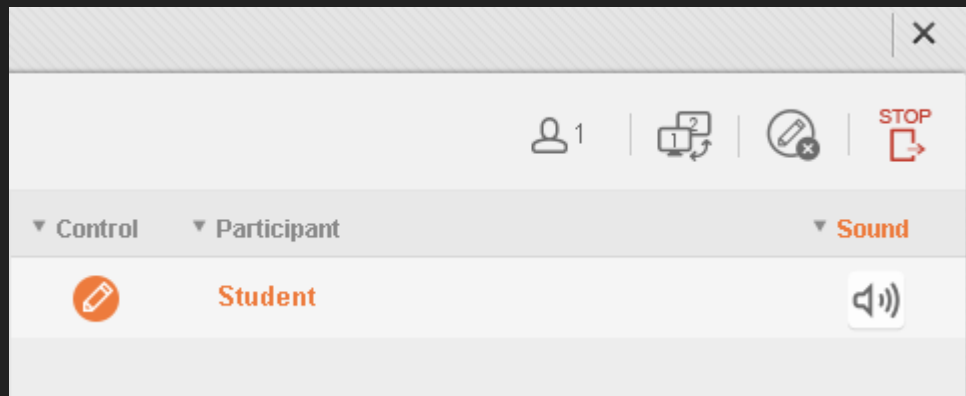
You can give students control if desired, which allows them to annotate on the screen. Each student can see the annotations.



Plainedge Splashtop Guide



To end the session, click on 'Stop'.



If you have any questions while using the program, please feel free to submit a ticket.